



## ABOUT US



### Sustainable And Stable Operation

- Perfect Enterprise Management System
- Twelve Years Of Focusing on Combiner Boxes Products



### Global Marketing System

- Large-scale Production, Products Shipment More Than 5 GW Capacity
- Exported To More Than 50 Countries And Regions



### International Product Certification

- Iso9001 Quality Management System
- TUV, CE, CQC, CB, ROHS Certifications



### Well Developed

- National High-tech Enterprises
- A Number Of High-tech Products And Patents
- Contious Technication Development Capability



### Global Service Guarantee

- Professional Life Cycle Management
- Tailor -made Services To Specific Needs
- Customer Service System
- 12 Years Technology Accumulation, Rich Experience In Project Service



MDZY230227

## MINDIAN ELECTRIC CO., LTD.

Add: Malujiao Industrial Zone, North Baixiang town, Yueqing, Zhejiang, China.

Sales call: 0577-62860666 0577-62860667

Wechat/Whatsapp: +86 15757872011

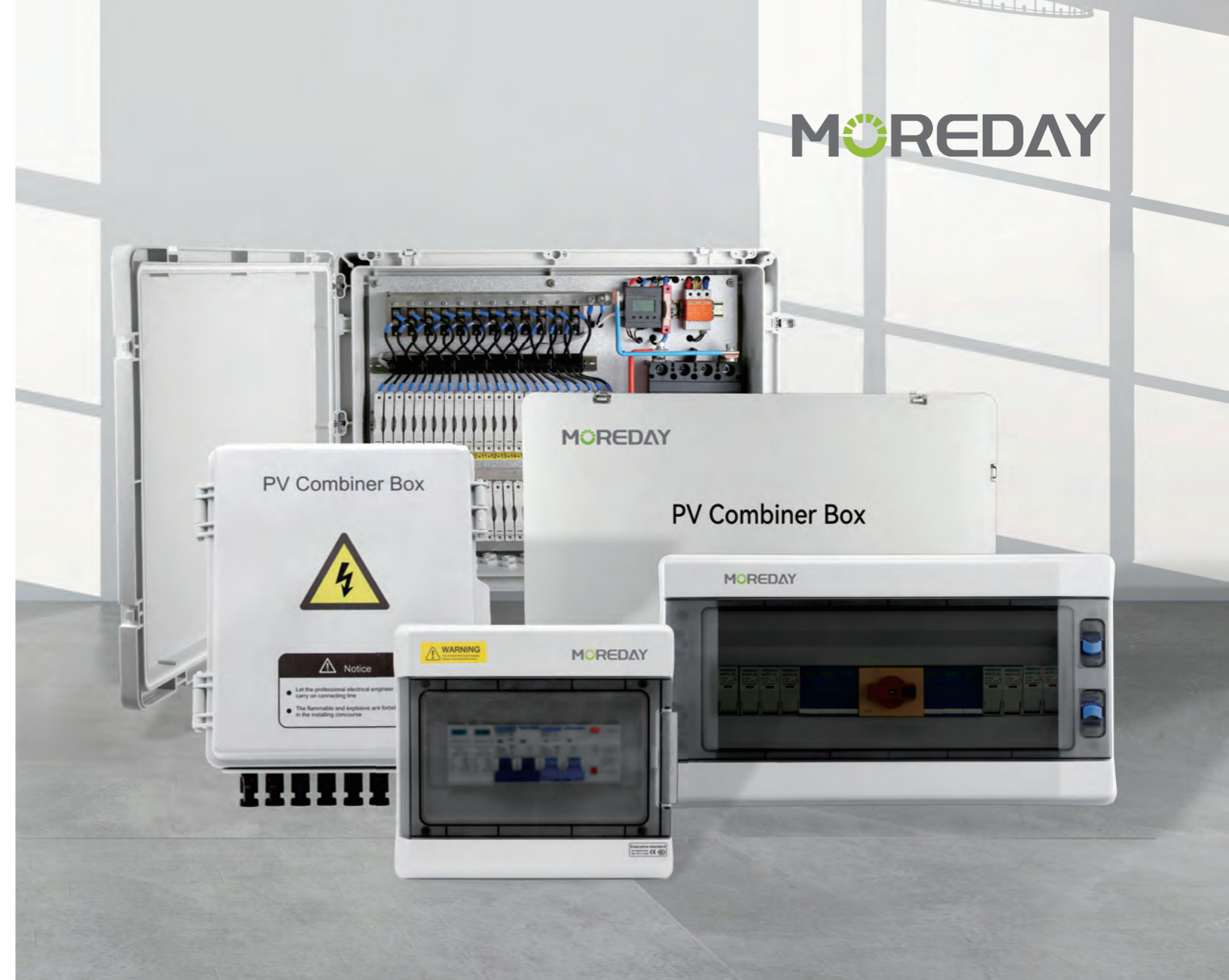
Http: www.moreday.com

E-mail: info@moreday.com



Scan the code to see more

MORÉDAY



## SOLAR STRING BOX

🏠 Residential System

🏢 Commercial System

🌐 MOREDAY.COM

# Enterprise Honor And Qualification

- Member Of Asian Photovoltaic Industry Association
- National High-tech Enterprise
- 2019 Well-known Brands In China's Photovoltaic Industry
- 2020 Caring For Employees Enterprise
- 2019、2020、2021 Snec Megawatt Golden Award
- 2022 Outstanding Photovoltaic Enterprise
- Chinese Technology-based SMES
- Zhejiang Promise-keeping 3A Enterprise

2009


16TH CELEBRATING ANNIVERSARY

2023



# CONTENTS

## Plastic Combiner Box 01

	<b>1 INPUT 1 OUTPUT</b> MDJB-1/1 600VDC Page 02		<b>4 INPUT 1 OUTPUT</b> MDJB-4/1 600VDC Page 10
	<b>2 INPUT 1 OUTPUT</b> MDJB-2/1 600VDC Page 03		<b>4 INPUT 1 OUTPUT</b> MDJB-4/1 1000VDC Page 11
	<b>2 INPUT 1 OUTPUT</b> MDJB-2/1 1000VDC Page 04		<b>4 INPUT 2 OUTPUT</b> MDJB-4/2 1000VDC Page 12
	<b>2 INPUT 1 OUTPUT</b> MDJB-2/1 1000VDC (Isolation Switch) Page 05		<b>4 INPUT 2 OUTPUT</b> MDJB-4/2 1000VDC Page 13
	<b>2 INPUT 2 OUTPUT</b> MDJB-2/2 600VDC Page 06		<b>5 INPUT 1 OUTPUT</b> MDJB-5/1 1000VDC (Each Panel String 12A) Page 14
	<b>2 INPUT 2 OUTPUT</b> MDJB-2/2 1000VDC Page 07		<b>6 INPUT 1 OUTPUT</b> MDJB-6/1 600VDC Page 15
	<b>2 INPUT 2 OUTPUT</b> MDJB-2/2 1000VDC (Isolation Switch) Page 08		<b>6 INPUT 2 OUTPUT</b> MDJB-6/2 1000VDC Page 16
	<b>3 INPUT 1 OUTPUT</b> MDJB-3/1 1000VDC Page 09		<b>6 INPUT 3 OUTPUT</b> MDJB-6/3 600VDC Page 17

Plastic Combiner Box  
Without Negative poles fuse

18



**4 INPUT 1 OUTPUT**  
MDJB-4B 600VDC

Page 19



**5 INPUT 1 OUTPUT**  
MDJB-5B 1000VDC

Page 20



**6 INPUT 1 OUTPUT**  
MDJB-6B 600VDC  
(With Diode)

Page 21



**6 INPUT 1 OUTPUT**  
MDJB-6B 600VDC

Page 22



**3 INPUT 1 OUTPUT**  
MDXLD-PV3/1 1000VDC

Page 27



**4 INPUT 1 OUTPUT**  
MDXLD-PV4/1 600VDC

Page 28



**4 INPUT 1 OUTPUT**  
MDXLD-PV4/1 1000VDC

Page 29



**4 INPUT 1 OUTPUT**  
MDXLD-PV4/1 1000VDC

Page 30



**4 INPUT 4 OUTPUT**  
MDXLD-PV4/4 1000VDC

Page 31



**5 INPUT 1 OUTPUT**  
MDXLD-PV5/1 1000VDC

Page 32



**6 INPUT 1 OUTPUT**  
MDXLD-PV6/1 1000VDC

Page 33



**8 INPUT 1 OUTPUT**  
MDXLD-PV8/1 1000VDC

Page 34



**8 INPUT 8 OUTPUT**  
MDXLD-PV8/8 1000VDC

Page 35



**10 INPUT 1 OUTPUT**  
MDXLD-PV10/1 1000VDC

Page 36



**10 INPUT 10 OUTPUT**  
MDXLD-PV10/10 1000VDC

Page 37



**12 INPUT 1 OUTPUT**  
MDXLD-PV12/1 1000VDC

Page 38



**12 INPUT 12 OUTPUT**  
MDXLD-PV12/12 1000VDC

Page 39



**16 INPUT 1 OUTPUT**  
MDXLD-PV16/1 1000VDC

Page 40



**18 INPUT 18 OUTPUT**  
MDXLD-PV18/18 1000VDC

Page 41

Metal AC Combiner Box 42



**2 INPUT 1 OUTPUT**  
MDHL-2/1 3Phase

Page 43



**3 INPUT 1 OUTPUT**  
MDHL-3/1 3Phase

Page 44



**5 INPUT 1 OUTPUT**  
MDHL-5/1 3Phase

Page 45



**6 INPUT 1 OUTPUT**  
MDKL-6/1 3Phase

Page 46

Metal Combiner box

23



**2 INPUT 1 OUTPUT**  
MDXLD-PV2/1 600VDC

Page 24



**2 INPUT 1 OUTPUT**  
MDXLD-PV2/1 1000VDC

Page 25



**3 INPUT 1 OUTPUT**  
MDXLD-PV3/1 600VDC

Page 26

Product Specification

# PLASTIC COMBINER BOX

DC SERIES (IP65)



## 1 INPUT 1 OUTPUT MDJB-1/1 600VDC

IP65 DC string box is designed for 1 string PV system.  
For surge protection and circuit breaker at solar DC side.

### DC Fuse (2PCS)

- IEC60947-3,1000V,15A

### DC SPD (1PCS)

- New IEC 61643,600V,2P
- Designed for solar PV protection
- Higher capacity In 40kA (IEC, TUV, CE, CB)
- Response time <25ns

### DC Circuit Breaker (1PCS)

- IEC60947-2,63A,600V,2P
- Over-load, short circuit Protection



General Data		Environment	
Model No.	MDJB-1/1	Operating Temperature	-20°C~+60°C
Input	1 string	Humidity	99%
Output	1 string	Altitude	2000M
Maximum Voltage	600V	Installation	Wall Mounting
Maximum Current Output	63A		
Enclosure		MDPN-6 way	
Material Type	PC		
Degree of Protection	IP65		
Degree of Resistance to Impacts	IK10		
Dimension (WxHxD)	165 x 200 x 100mm		



## 2 INPUT 1 OUTPUT MDJB-2/1 600VDC

IP65 DC string box is designed for 2 string PV system.  
For surge protection and circuit breaker at solar DC side.

### DC Fuse (4PCS)

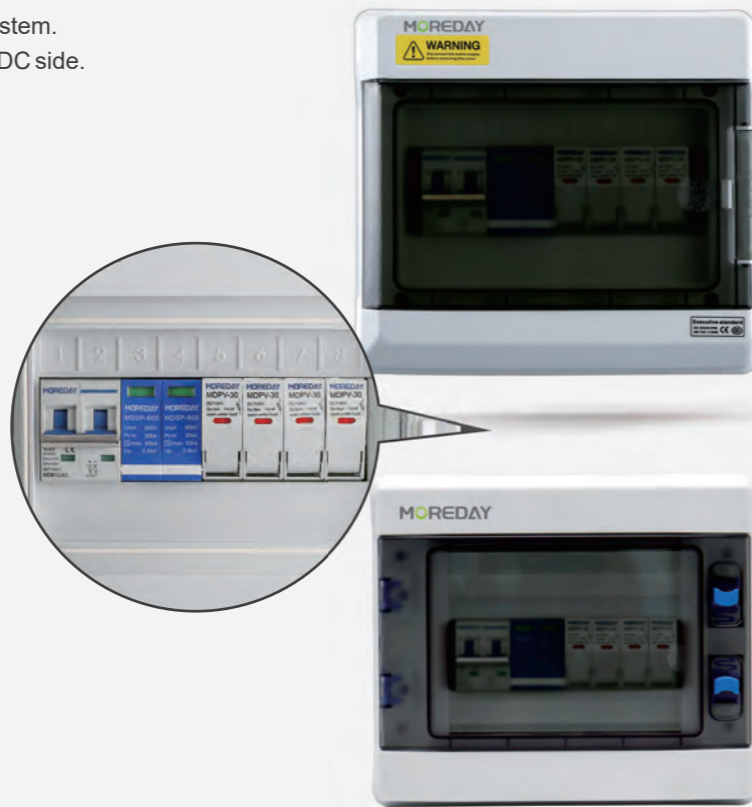
- IEC60947-3,1000V,15A

### DC SPD (1PCS)

- New IEC 61643,600V,2P
- Designed for solar PV protection
- Higher capacity In 40kA (IEC, TUV, CE, CB)
- Response time <25ns

### DC Circuit Breaker (1PCS)

- IEC60947-2,63A,600V,2P
- Over-load, short circuit Protection



General Data		Environment	
Model No.	MDJB-2/1	Operating Temperature	-20°C~+60°C
Input	2 string	Humidity	99%
Output	1 string	Altitude	2000M
Maximum Voltage	600V	Installation	Wall Mounting
Maximum Current Output	63A		

Enclosure	MDPN-9 way	MDJB-8 way
	Material Type	PC
Degree of Protection	IP65	
Degree of Resistance to Impacts	IK10	
Dimension (WxHxD)	220 x 200 x 110mm	245 x 235 x 125mm

## 2 INPUT 1 OUTPUT MDJB-2/1 1000VDC

IP65 DC string box is designed for 2 string PV system.  
For surge protection and circuit breaker at solar DC side.

### DC Fuse (4PCS)

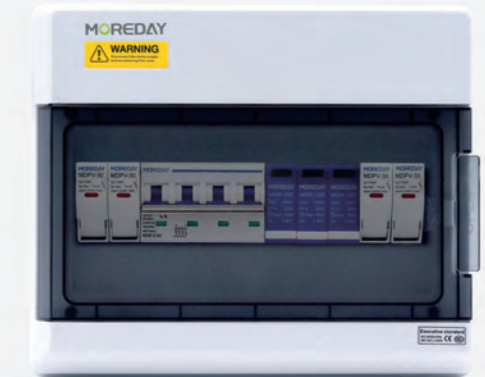
- IEC60947-3,1000V,15A

### DC SPD (1PCS)

- New IEC 61643,1000V,3P
- Designed for solar PV protection
- Higher capacity In 40kA (IEC, TUV, CE, CB)
- Response time <25ns

### DC Circuit Breaker (1PCS)

- IEC60947-2,63A,1000V,4P
- Over-load, short circuit Protection



General Data		Environment	
Model No.	MDJB-2/1	Operating Temperature	-20°C~+60°C
Input	2 string	Humidity	99%
Output	1 string	Altitude	2000M
Maximum Voltage	1000V	Installation	Wall Mounting
Maximum Current Output	63A		

Enclosure	MDPN-12 way	MDJB-12 way
	Material Type	PC
Degree of Protection	IP65	
Degree of Resistance to Impacts	IK10	
Dimension (WxHxD)	270 x 230 x 110mm	315 x 235 x 125mm

## 2 INPUT 1 OUTPUT

### MDJB-2/1 1000VDC (Isolation Switch)

IP65 DC string box is designed for 2 string PV system.  
For surge protection and circuit breaker at solar DC side.

#### DC Fuse (4PCS)

- IEC60947-3,1000V,15A

#### DC SPD (1PCS)

- New IEC 61643,1000V,3P
- Designed for solar PV protection
- Higher capacity In 40kA (IEC,TUV,CE,CB)
- Response time <25ns

#### DC Isolator switch (1PCS)

- IEC60947-3 PV2 Cut off reverse current and over current
- Door clutch easier operating and lockable handle
- 32A 1200V



General Data		Environment	
Model No.	MDJB-2/1	Operating Temperature	-20°C~+60°C
Input	2 string	Humidity	99%
Output	1 string	Altitude	2000M
Maximum Voltage	1000V	Installation	Wall Mounting
Maximum Current Output	32A		

Enclosure	MDPN-12 way	MDJB-12 way
Material Type	PC	
Degree of Protection	IP65	
Degree of Resistance to Impacts	IK10	
Dimension (WxHxD)	270 x 230 x 110mm	315 x 235 x 125mm

## 2 INPUT 2 OUTPUT

### MDJB-2/2 600VDC

IP65 DC string box is designed for 2 string PV system.  
For surge protection and circuit breaker at solar DC side.

#### DC Fuse (4PCS)

- IEC60947-3,1000V,15A

#### DC SPD (2PCS)

- New IEC 61643,600V,2P
- Designed for solar PV protection
- Higher capacity In 40kA (IEC,TUV,CE,CB)
- Response time <25ns

#### DC Circuit Breaker (2PCS)

- IEC60947-2,63A,600V,2P
- Over-load, short circuit Protection



General Data		Environment	
Model No.	MDJB-2/1	Operating Temperature	-20°C~+60°C
Input	2 string	Humidity	99%
Output	2 string	Altitude	2000M
Maximum Voltage	600V	Installation	Wall Mounting
Maximum Current Output	63A		

Enclosure	MDPN-12 way	MDJB-12 way
Material Type	PC	
Degree of Protection	IP65	
Degree of Resistance to Impacts	IK10	
Dimension (WxHxD)	270x230 x 110mm	315x235 x 125mm

## 2 INPUT 2 OUTPUT MDJB-2/2 1000VDC

IP65 DC string box is designed for 2 string PV system.  
For surge protection and circuit breaker at solar DC side.

### DC Fuse (4PCS)

- IEC60947-3,1000V,15A

### DC SPD (2PCS)

- New IEC 61643,1000V,3P
- Designed for solar PV protection
- Higher capacity In 40kA (IEC,TUV,CE,CB)
- Response time <25ns

### DC Circuit Breaker (2PCS)

- IEC60947-2,63A,1000V,4P
- Over-load, short circuit Protection



## 2 INPUT 2 OUTPUT MDJB-2/2 1000VDC (Isolation Switch)

IP65 DC string box is designed for 2 string PV system.  
For surge protection and circuit breaker at solar DC side.

### DC Fuse (4PCS)

- IEC60947-3,1000V,15A

### DC SPD (2PCS)

- New IEC 61643,1000V,3P
- Designed for solar PV protection
- Higher capacity In 40kA (IEC,TUV,CE,CB)
- Response time <25ns

### DC Isolator switch (1PCS)

- IEC60947-3 PV2 Cut off reverse current and over current
- Door clutch easier operating and lockable handle
- 32A 1200V



General Data		Environment	
Model No.	MDJB-2/1	Operating Temperature	-20°C~+60°C
Input	2 string	Humidity	99%
Output	2 string	Altitude	2000M
Maximum Voltage	1000V	Installation	Wall Mounting
Maximum Current Output	63A		

Enclosure	MDPN-18 way	MDJB-18 way
Material Type	PC	
Degree of Protection	IP65	
Degree of Resistance to Impacts	IK10	
Dimension (WxHxD)	375 x 230 x 110mm	425 x 235 x 125mm

General Data		Environment	
Model No.	MDJB-2/1	Operating Temperature	-20°C~+60°C
Input	2 string	Humidity	99%
Output	2 string	Altitude	2000M
Maximum Voltage	1000V	Installation	Wall Mounting
Maximum Current Output	32A		

Enclosure	MDPN-18 way	MDJB-18 way
Material Type	PC	
Degree of Protection	IP65	
Degree of Resistance to Impacts	IK10	
Dimension (WxHxD)	375 x 230 x 110mm	425 x 235 x 125mm

## 3 INPUT 1 OUTPUT MDJB-3/1 1000VDC

IP65 DC string box is designed for 3 string PV system.  
For surge protection and circuit breaker at solar DC side.

### DC Fuse (6PCS)

- IEC60947-3,1000V,15A

### DC SPD (1PCS)

- New IEC 61643,1000V,2P
- Designed for solar PV protection
- Higher capacity In 40kA (IEC,TUV,CE,CB)
- Response time <25ns

### DC Circuit Breaker (1PCS)

- IEC60947-2,63A,1000V,4P
- Over-load, short circuit Protection



## 4 INPUT 1 OUTPUT MDJB-4/1 600VDC

IP65 DC string box is designed for 4 string PV system.  
For surge protection and circuit breaker at solar DC side.

### DC Fuse (8PCS)

- IEC60947-3,1000V,15A

### DC SPD (1PCS)

- New IEC 61643,1000V,2P
- Designed for solar PV protection
- Higher capacity In 40kA (IEC,TUV,CE,CB)
- Response time <25ns

### DC Circuit Breaker (1PCS)

- IEC60947-2,63A,600V,2P
- Over-load, short circuit Protection



General Data		Environment	
Model No.	MDJB-3/1	Operating Temperature	-20°C~+60°C
Input	3 string	Humidity	99%
Output	1 string	Altitude	2000M
Maximum Voltage	1000V	Installation	Wall Mounting
Maximum Current Output	63A		

Enclosure	MDPN-12 way	MDJB-12 way
	Material Type	PC
Degree of Protection	IP65	
Degree of Resistance to Impacts	IK10	
Dimension (WxHxD)	270 x 230 x 110mm	315 x 235 x 125mm

General Data		Environment	
Model No.	MDJB-4/1	Operating Temperature	-20°C~+60°C
Input	4 string	Humidity	99%
Output	1 string	Altitude	2000M
Maximum Voltage	600V	Installation	Wall Mounting
Maximum Current Output	63A		

Enclosure	MDPN-12 way	MDJB-12 way
	Material Type	PC
Degree of Protection	IP65	
Degree of Resistance to Impacts	IK10	
Dimension (WxHxD)	270 x 230 x 110mm	315 x 235 x 125mm



## 4 INPUT 1 OUTPUT MDJB-4/1 1000VDC

IP65 DC string box is designed for 4 string PV system.  
For surge protection and circuit breaker at solar DC side.

### DC Fuse (8PCS)

- IEC60947-3,1000V,15A

### DC SPD (1PCS)

- New IEC 61643,1000V,3P
- Designed for solar PV protection
- Higher capacity In 40kA (IEC,TUV,CE,CB)
- Response time <25ns

### DC Circuit Breaker (1PCS)

- IEC60947-2,63A,1000V,4P
- Over-load, short circuit Protection



## 4 INPUT 2 OUTPUT MDJB-4/2 1000VDC

IP65 DC string box is designed for 4 string PV system.  
For surge protection and circuit breaker at solar DC side.

### DC Fuse (8PCS)

- IEC60947-3,1000V,15A

### DC SPD (2PCS)

- New IEC 61643,1000V,3P
- Designed for solar PV protection
- Higher capacity In 40kA (IEC,TUV,CE,CB)
- Response time <25ns

### DC Isolator switch (1PCS)

- IEC60947-3 PV2 Cut off reverse current and over current
- Door clutch easier operating and lockable handle
- 32A 1200V



General Data		Environment	
Model No.	MDJB-4/1	Operating Temperature	-20°C~+60°C
Input	4 string	Humidity	99%
Output	1 string	Altitude	2000M
Maximum Voltage	1000V	Installation	Wall Mounting
Maximum Current Output	63A		

Enclosure	MDPN-18 way	MDJB-18 way
Material Type	PC	
Degree of Protection	IP65	
Degree of Resistance to Impacts	IK10	
Dimension (WxHxD)	375 x 230 x 110mm	425 x 235 x 125mm

General Data		Environment	
Model No.	MDJB-4/2	Operating Temperature	-20°C~+60°C
Input	4 string	Humidity	99%
Output	2 string	Altitude	2000M
Maximum Voltage	1000V	Installation	Wall Mounting
Maximum Current Output	32A		

Enclosure	MDPN-18 way	MDJB-18 way
Material Type	PC	
Degree of Protection	IP65	
Degree of Resistance to Impacts	IK10	
Dimension (WxHxD)	375 x 230 x 110mm	425 x 235 x 125mm

# 4 INPUT 2 OUTPUT

## MDJB-4/2 1000VDC

IP65 DC string box is designed for 4 string PV system.  
For surge protection and circuit breaker at solar DC side.

### DC Fuse (8PCS)

- IEC60947-3,1000V,15A

### DC SPD (2PCS)

- New IEC 61643,1000V,3P
- Designed for solar PV protection
- Higher capacity In 40kA (IEC,TUV,CE,CB)
- Response time <25ns

### DC Circuit Breaker (2PCS)

- IEC60947-2,63A,1000V,4P
- Over-load, short circuit Protection



# 5 INPUT 1 OUTPUT

## MDJB-5/1 1000VDC (Each Panel String 12A)

IP65 DC string box is designed for 5 string PV system.  
For surge protection and circuit breaker at solar DC side.

### DC Fuse (10PCS)

- IEC60947-3,1000V,15A

### DC SPD (1PCS)

- New IEC 61643,1000V,3P
- Designed for solar PV protection
- Higher capacity In 40kA (IEC,TUV,CE,CB)
- Response time <25ns

### DC Circuit Breaker (1PCS)

- IEC60947-2,63A,1000V,3P
- Over-load, short circuit Protection



General Data		Environment	
Model No.	MDJB-4/1	Operating Temperature	-20°C~+60°C
Input	4 string	Humidity	99%
Output	2 string	Altitude	2000M
Maximum Voltage	1000V	Installation	Wall Mounting
Maximum Current Output	63A		

Enclosure	MDPN-24 way		MDJB-24 way	
	Material Type	PC		
Degree of Protection	IP65			
Degree of Resistance to Impacts	IK10			
Dimension (WxHxD)	270 x 375 x 110mm	315 x 405 x 125mm		

General Data		Environment	
Model No.	MDJB-5/1	Operating Temperature	-20°C~+60°C
Input	5 string	Humidity	99%
Output	1 string	Altitude	2000M
Maximum Voltage	1000V	Installation	Wall Mounting
Maximum Current Output	63A		

Enclosure	MDPN-18 way		MDJB-18 way	
	Material Type	PC		
Degree of Protection	IP65			
Degree of Resistance to Impacts	IK10			
Dimension (WxHxD)	375 x 230 x 110mm	425 x 235 x 125mm		

# 6 INPUT 1 OUTPUT

## MDJB-6/1 600VDC

IP65 DC string box is designed for 6 string PV system.  
For surge protection and circuit breaker at solar DC side.

### DC Fuse (12PCS)

- IEC60947-3,1000V,15A

### DC SPD (1PCS)

- New IEC 61643,600V,2P
- Designed for solar PV protection
- Higher capacity In 40kA (IEC,TUV,CE,CB)
- Response time <25ns

### DC Circuit Breaker (1PCS)

- IEC60947-2,100A,600V,2P
- Over-load, short circuit Protection



# 6 INPUT 2 OUTPUT

## MDJB-6/2 1000VDC

IP65 DC string box is designed for 6 string PV system.  
For surge protection and circuit breaker at solar DC side.

### DC Fuse (12PCS)

- IEC60947-3,1000V,15A

### DC SPD (2PCS)

- New IEC 61643,1000V,2P
- Designed for solar PV protection
- Higher capacity In 40kA (IEC,TUV,CE,CB)
- Response time <25ns

### DC Circuit Breaker (2PCS)

- IEC60947-2,63A,1000V,4P
- Over-load, short circuit Protection



General Data		Environment	
Model No.	MDJB-6/1	Operating Temperature	-20°C~+60°C
Input	6 string	Humidity	99%
Output	1 string	Altitude	2000M
Maximum Voltage	600V	Installation	Wall Mounting
Maximum Current Output	100A		

Enclosure	MDPN-18 way	MDJB-18 way
	Material Type	PC
Degree of Protection	IP65	
Degree of Resistance to Impacts	IK10	
Dimension (WxHxD)	375 x 230 x 110mm	425 x 235 x 125mm

General Data		Environment	
Model No.	MDJB-6/2	Operating Temperature	-20°C~+60°C
Input	6 string	Humidity	99%
Output	2 string	Altitude	2000M
Maximum Voltage	1000V	Installation	Wall Mounting
Maximum Current Output	63A		

Enclosure	MDPN-24 way	MDJB-24 way
	Material Type	PC
Degree of Protection	IP65	
Degree of Resistance to Impacts	IK10	
Dimension (WxHxD)	270 x 375 x 110mm	315 x 405 x 125mm

# 6 INPUT 3 OUTPUT

## MDJB-6/3 600VDC

IP65 DC string box is designed for 6 string PV system.  
For surge protection and circuit breaker at solar DC side.

### DC Fuse (12PCS)

- IEC60947-3,1000V,15A

### DC SPD (3PCS)

- New IEC 61643,600V,2P
- Designed for solar PV protection
- Higher capacity In 40kA (IEC,TUV,CE,CB)
- Response time <25ns

### DC Circuit Breaker (3PCS)

- IEC60947-2,63A,600V,2P
- Over-load, short circuit Protection



Product Specification

# PLASTIC COMBINER BOX

## Without Negative Poles Fuse

DC SERIES (IP65)



General Data		Environment	
Model No.	MDJB-6/1	Operating Temperature	-20°C~+60°C
Input	6 string	Humidity	99%
Output	3 string	Altitude	2000M
Maximum Voltage	600V	Installation	Wall Mounting
Maximum Current Output	63A		
Enclosure		MDPN-36 way	
Material Type	PC		
Degree of Protection	IP65		
Degree of Resistance to Impacts	IK10		
Dimension (WxHxD)	270 x 530 x 110mm		



# 4 INPUT 1 OUTPUT MDJB-4B 600VDC

Ip65 DC string box is designed for 4 string PV system.  
For surge protection and circuit breaker at solar DC side.

### DC Fuse (4PCS)

- IEC60947-3,1000V,15A

### DC SPD (1PCS)

- New IEC 61643,1000V,2P
- Designed for solar PV protection
- Higher capacity In 40kA (IEC,TUV,CE,CB)
- Response time <25ns

### DC Circuit Breaker (1PCS)

- IEC60947-2,63A,600V,2P
- Over-load, short circuit Protection



General Data		Environment	
Model No.	MDJB-4B	Operating Temperature	-20°C~+60°C
Input	4 string	Humidity	99%
Output	1 string	Altitude	2000M
Maximum Voltage	600V	Installation	Wall Mounting
Maximum Current Output	63A		
Enclosure			
Material Type	PC		
Degree of Protection	IP65		
Degree of Resistance to Impacts	IK10		
Dimension (WxHxD)	170 x 280 x 120mm		

# 5 INPUT 1 OUTPUT MDJB-5B 1000VDC

Ip65 DC string box is designed for 5 string PV system.  
For surge protection and circuit breaker at solar DC side.

### DC Fuse (5PCS)

- IEC60947-3,1000V,15A

### DC SPD (1PCS)

- New IEC 61643,1000V,2P
- Designed for solar PV protection
- Higher capacity In 40kA (IEC,TUV,CE,CB)
- Response time <25ns

### DC Circuit Breaker (1PCS)

- IEC60947-2,63A,1000V,2P
- Over-load, short circuit Protection



General Data		Environment	
Model No.	MDJB-5B	Operating Temperature	-20°C~+60°C
Input	5 string	Humidity	99%
Output	1 string	Altitude	2000M
Maximum Voltage	1000V	Installation	Wall Mounting
Maximum Current Output	63A		
Enclosure			
Material Type	PC		
Degree of Protection	IP65		
Degree of Resistance to Impacts	IK10		
Dimension (WxHxD)	270 x 320 x 150mm		

Plastic Combiner Box  
Without Negative poles fuse

# 6 INPUT 1 OUTPUT

## MDJB-6B 600VDC (With Diode)

IP65 DC string box is designed for 6 string PV system.  
For surge protection and circuit breaker at solar DC side.

### DC Fuse (6PCS)

- IEC60947-3,1000V,15A

### DC SPD (1PCS)

- New IEC 61643,1000V,2P
- Designed for solar PV protection
- Higher capacity In 40kA (IEC,TUV,CE,CB)
- Response time <25ns

### DC Circuit Breaker (1PCS)

- IEC60947-2,63A,600V,2P
- Over-load, short circuit Protection

### Diode (1PCS)



# 6 INPUT 1 OUTPUT

## MDJB-6B 600VDC

IP65 DC string box is designed for 6 string PV system.  
For surge protection and circuit breaker at solar DC side.

### DC Fuse (6PCS)

- IEC60947-3,1000V,15A

### DC SPD (1PCS)

- New IEC 61643,1000V,2P
- Designed for solar PV protection
- Higher capacity In 40kA (IEC,TUV,CE,CB)
- Response time <25ns

### DC Circuit Breaker (1PCS)

- IEC60947-2,63A,600V,2P
- Over-load, short circuit Protection



Plastic Combiner Box  
Without Negative poles fuse

General Data		Environment	
Model No.	MDJB-6B	Operating Temperature	-20°C~+60°C
Input	6 string	Humidity	99%
Output	1 string	Altitude	2000M
Maximum Voltage	600V	Installation	Wall Mounting
Maximum Current Output	63A		
Enclosure			
Material Type	PC		
Degree of Protection	IP65		
Degree of Resistance to Impacts	IK10		
Dimension (WxHxD)	270 x 320 x 150mm		

General Data		Environment	
Model No.	MDJB-6B	Operating Temperature	-20°C~+60°C
Input	6 string	Humidity	99%
Output	1 string	Altitude	2000M
Maximum Voltage	600V	Installation	Wall Mounting
Maximum Current Output	63A		
Enclosure			
Material Type	PC		
Degree of Protection	IP65		
Degree of Resistance to Impacts	IK10		
Dimension (WxHxD)	270 x 320 x 150mm		

Product Specification

# METAL COMBINER BOX

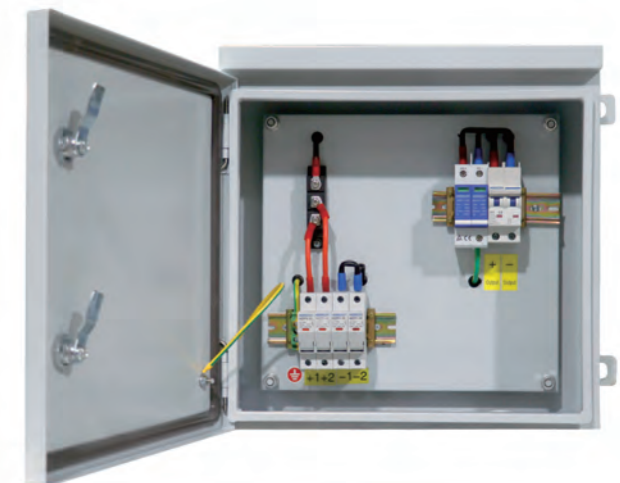
DC SERIES (IP54)



# 2 INPUT 1 OUTPUT MDXLD-PV2/1 600VDC



General Data		DC SPD(1PCS)	MDSP-600V 2P
Model No.	MDXLD-PV2/1	Max Operation Voltage (Ucpv)	600V
Input	2 string	Standard Compliance with	IEC 61643
Output	1 string	Maximum Discharge Current	40KA
Maximum Voltage	600V	Certification	TUV,CE,CB
Maximum Current Output	63A		
Enclosure		DC Fuse(4PCS)	MDPV-30
Material Type	Metal	Rated Working Voltage	1000V
Degree of Protection	IP54	Fuse Link	10x38mmLITTEL 15A
Degree of Resistance to Impacts	IK10	Certification	TUV,CB,CE
Dimension (WxHxD)	400x400 x 160mm		
Environment		DC Circuit Breaker(1PCS)	MDB1Z-2P
Operating Temperature	-20°C~+60°C	Rated Insulation Voltage (Ui)	600V
Humidity	99%	Rated Current (Ie)	63A
Altitude	2000M	Standard Compliance with	IEC 60947-2
Installation	Wall Mounting	Certification	CB, CE
		Diode(1PCS)	



Metal  
Combiner box



## 2 INPUT 1 OUTPUT MDXLD-PV2/1 1000VDC



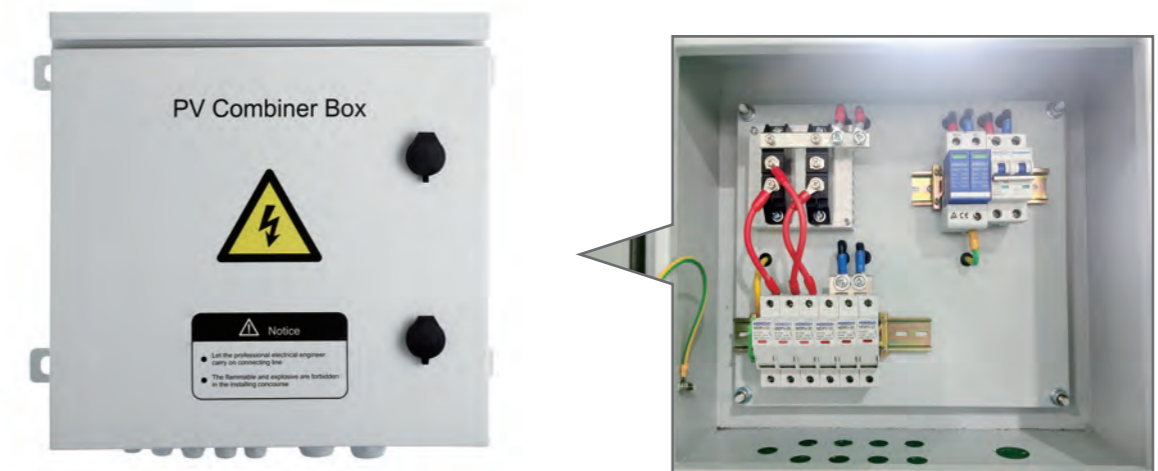
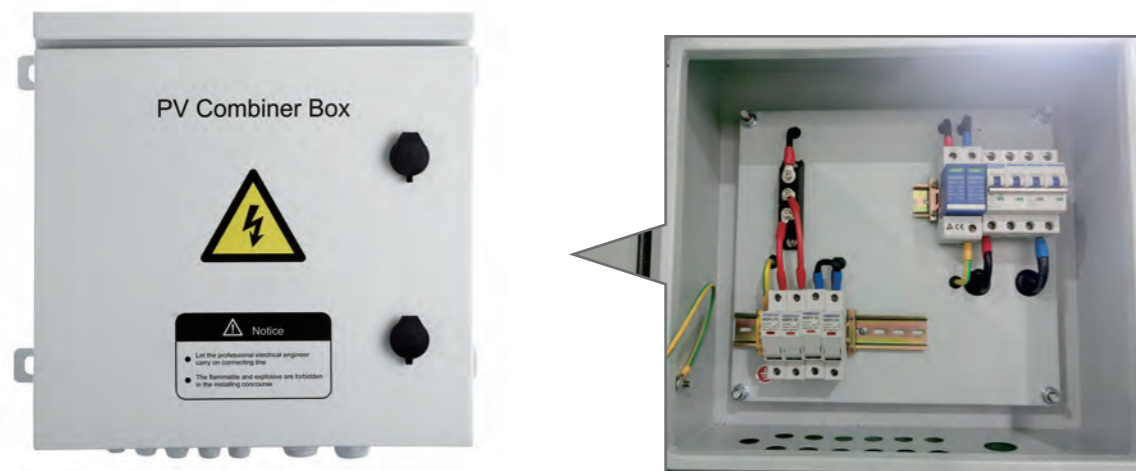
General Data		DC SPD(1PCS)	MDSP-1000V 2P
Model No.	MDXLD-PV2/1	Max Operation Voltage (Ucpv)	1000V
Input	2 string	Standard Compliance with	IEC 61643
Output	1 string	Maximum Discharge Current	40KA
Maximum Voltage	1000V	Certification	TUV,CE,CB
Maximum Current Output	63A		
Enclosure		DC Fuse(4PCS)	MDPV-30
Material Type	Metal	Rated Working Voltage	1000V
Degree of Protection	IP54	Fuse Link	10x38mmLITTEL 15A
Degree of Resistance to Impacts	IK10	Certification	TUV,CB,CE
Dimension (WxHxD)	400x 400 x 160mm		
Environment		DC Circuit Breaker(1PCS)	MDB1Z-4P
Operating Temperature	-20°C~+60°C	Rated Insulation Voltage (Ui)	1000V
Humidity	99%	Rated Current (Ie)	63A
Altitude	2000M	Standard Compliance with	IEC 60947-2
Installation	Wall Mounting	Certification	CB, CE
		Diode(1PCS)	

## 3 INPUT 1 OUTPUT MDXLD-PV3/1 600VDC



General Data		DC SPD(1PCS)	MDSP-600V 2P
Model No.	MDXLD-PV3/1	Max Operation Voltage (Ucpv)	600V
Input	3 string	Standard Compliance with	IEC 61643
Output	1 string	Maximum Discharge Current	40KA
Maximum Voltage	600V	Certification	TUV,CE,CB
Maximum Current Output	63A		
Enclosure		DC Fuse(6PCS)	MDPV-30
Material Type	Metal	Rated Working Voltage	1000V
Degree of Protection	IP54	Fuse Link	10x38mmLITTEL 15A
Degree of Resistance to Impacts	IK10	Certification	TUV,CB,CE
Dimension (WxHxD)	400x 400 x 160mm		
Environment		DC Circuit Breaker(1PCS)	MDB1Z-2P
Operating Temperature	-20°C~+60°C	Rated Insulation Voltage (Ui)	600V
Humidity	99%	Rated Current (Ie)	63A
Altitude	2000M	Standard Compliance with	IEC 60947-2
Installation	Wall Mounting	Certification	CB, CE
		Diode(2PCS)	

Metal  
Combiner box





## 3 INPUT 1 OUTPUT MDXLD-PV3/1 1000VDC



General Data		DC SPD(1PCS)	MDSP-1000V 3P
Model No.	MDXLD-PV3/1	Max Operation Voltage (Ucpv)	1000V
Input	3 string	Standard Compliance with	IEC 61643
Output	1 string	Maximum Discharge Current	40KA
Maximum Voltage	1000V	Certification	TUV,CE,CB
Maximum Current Output	63A		

Enclosure		DC Fuse(6PCS)	MDPV-30
Material Type	Metal	Rated Working Voltage	1000V
Degree of Protection	IP54	Fuse Link	10x38mmLITTEL 15A
Degree of Resistance to Impacts	IK10	Certification	TUV,CB,CE
Dimension (WxHxD)	400x 400 x 160mm		

Environment		DC Circuit Breaker(1PCS)	MDB1Z-4P
Operating Temperature	-20°C~+60°C	Rated Insulation Voltage (Ui)	1000V
Humidity	99%	Rated Current (Ie)	63A
Altitude	2000M	Standard Compliance with	IEC 60947-2
Installation	Wall Mounting	Certification	CB, CE

Diode(2PCS)	
-------------	--

## 4 INPUT 1 OUTPUT MDXLD-PV4/1 600VDC



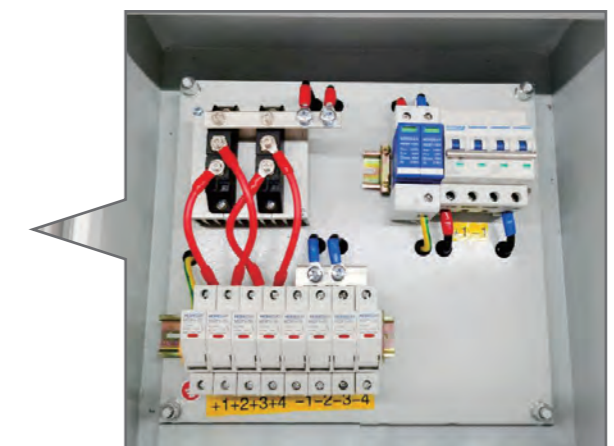
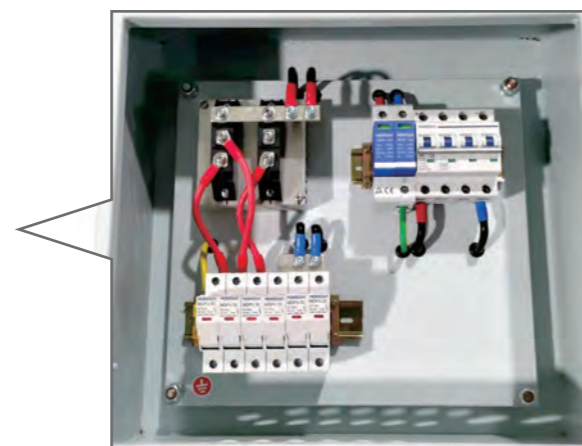
General Data		DC SPD(1PCS)	MDSP-600V 2P
Model No.	MDXLD-PV4/1	Max Operation Voltage (Ucpv)	600V
Input	4 string	Standard Compliance with	IEC 61643
Output	1 string	Maximum Discharge Current	40KA
Maximum Voltage	600V	Certification	TUV,CE,CB
Maximum Current Output	63A		

Enclosure		DC Fuse(8PCS)	MDPV-30
Material Type	Metal	Rated Working Voltage	1000V
Degree of Protection	IP54	Fuse Link	10x38mmLITTEL 15A
Degree of Resistance to Impacts	IK10	Certification	TUV,CB,CE
Dimension (WxHxD)	400x 400 x 160mm		

Environment		DC Circuit Breaker(1PCS)	MDB1Z-2P
Operating Temperature	-20°C~+60°C	Rated Insulation Voltage (Ui)	600V
Humidity	99%	Rated Current (Ie)	63A
Altitude	2000M	Standard Compliance with	IEC 60947-2
Installation	Wall Mounting	Certification	CB, CE

Diode(2PCS)	
-------------	--

Metal  
Combiner box



# 4 INPUT 1 OUTPUT

## MDXLD-PV4/1 1000VDC



General Data		DC SPD(1PCS)	MDSP-1000V 3P
Model No.	MDXLD-PV4/1	Max Operation Voltage (Ucpv)	1000V
Input	4 string	Standard Compliance with	IEC 61643
Output	1 string	Maximum Discharge Current	40KA
Maximum Voltage	1000V	Certification	TUV,CE,CB
Maximum Current Output	63A		

Enclosure		DC Fuse(8PCS)	MDPV-30
Material Type	Metal	Rated Working Voltage	1000V
Degree of Protection	IP54	Fuse Link	10x38mmLITTEL 15A
Degree of Resistance to Impacts	IK10	Certification	TUV,CB,CE
Dimension (WxHxD)	400x 400 x 160mm		

Environment		DC Circuit Breaker(1PCS)	MDB1Z-4P
Operating Temperature	-20°C~+60°C	Rated Insulation Voltage (Ui)	1000V
Humidity	99%	Rated Current (Ie)	63A
Altitude	2000M	Standard Compliance with	IEC 60947-2
Installation	Wall Mounting	Certification	CB, CE

Diode(2PCS)	
-------------	--

# 4 INPUT 1 OUTPUT

## MDXLD-PV4/1 1000VDC



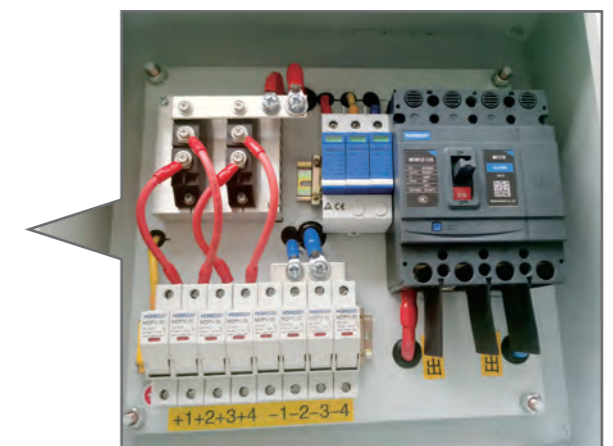
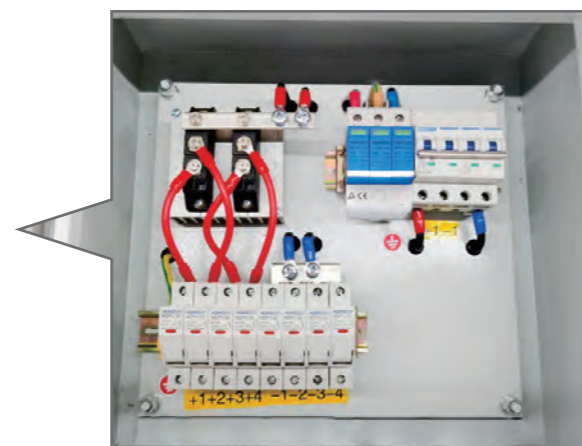
General Data		DC SPD(1PCS)	MDSP-1000V 3P
Model No.	MDXLD-PV4/1	Max Operation Voltage (Ucpv)	1000V
Input	4 string	Standard Compliance with	IEC 61643
Output	1 string	Maximum Discharge Current	40KA
Maximum Voltage	1000V	Certification	TUV,CE,CB
Maximum Current Output	125A		

Enclosure		DC Fuse(8PCS)	MDPV-30
Material Type	Metal	Rated Working Voltage	1000V
Degree of Protection	IP54	Fuse Link	10x38mmLITTEL 15A
Degree of Resistance to Impacts	IK10	Certification	TUV,CB,CE
Dimension (WxHxD)	400x 400 x 160mm		

Environment		DC Circuit Breaker(1PCS)	MDB1Z-125 4P
Operating Temperature	-20°C~+60°C	Rated Insulation Voltage (Ui)	1000V
Humidity	99%	Rated Current (Ie)	125A
Altitude	2000M	Standard Compliance with	IEC 60947-2
Installation	Wall Mounting	Certification	CB, CE

Diode(2PCS)	
-------------	--

Metal Combiner box



# 4 INPUT 4 OUTPUT

## MDXLD-PV4/4 1000VDC



General Data		DC SPD(4PCS)	
Model No.	MDXLD-PV4/4	Max Operation Voltage (Ucpv)	1000V
Input	4 string	Standard Compliance with	IEC 61643
Output	4 string	Maximum Discharge Current	40KA
Maximum Voltage	1000V	Certification	TUV,CE,CB
Maximum Current Output	63A		

Enclosure		DC Fuse(8PCS)	
Material Type	Metal	Rated Working Voltage	1000V
Degree of Protection	IP54	Fuse Link	10x38mmLITTEL 15A
Degree of Resistance to Impacts	IK10	Certification	TUV,CB,CE
Dimension (WxHxD)	400x 500 x 160mm		

Environment		DC Circuit Breaker(4PCS)	
Operating Temperature	-20°C~+60°C	Rated Insulation Voltage (Ui)	1000V
Humidity	99%	Rated Current (Ie)	63A
Altitude	2000M	Standard Compliance with	IEC 60947-2
Installation	Wall Mounting	Certification	CB, CE

Diode(4PCS)	
-------------	--

# 5 INPUT 1 OUTPUT

## MDXLD-PV5/1 1000VDC



General Data		DC SPD(1PCS)	
Model No.	MDXLD-PV5/1	Max Operation Voltage (Ucpv)	1000V
Input	5 string	Standard Compliance with	IEC 61643
Output	1 string	Maximum Discharge Current	40KA
Maximum Voltage	1000V	Certification	TUV,CE,CB
Maximum Current Output	63A		

Enclosure		DC Fuse(10PCS)	
Material Type	Metal	Rated Working Voltage	1000V
Degree of Protection	IP54	Fuse Link	10x38mmLITTEL 15A
Degree of Resistance to Impacts	IK10	Certification	TUV,CB,CE
Dimension (WxHxD)	400x 400 x 160mm		

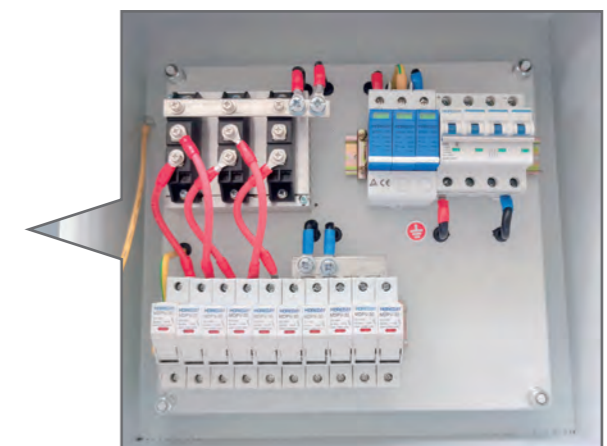
  

Environment		DC Circuit Breaker(1PCS)	
Operating Temperature	-20°C~+60°C	Rated Insulation Voltage (Ui)	1000V
Humidity	99%	Rated Current (Ie)	63A
Altitude	2000M	Standard Compliance with	IEC 60947-2
Installation	Wall Mounting	Certification	CB, CE

Diode(3PCS)	
-------------	--

Metal Combiner box



# 6 INPUT 1 OUTPUT

## MDXLD-PV6/1 1000VDC



General Data		DC SPD(1PCS)	MDSP-1000V 3P
Model No.	MDXLD-PV6/1	Max Operation Voltage (Ucpv)	1000V
Input	6 string	Standard Compliance with	IEC 61643
Output	1 string	Maximum Discharge Current	40KA
Maximum Voltage	1000V	Certification	TUV,CE,CB
Maximum Current Output	125A		
Enclosure		DC Fuse(12PCS)	MDPV-30
Material Type	Metal	Rated Working Voltage	1000V
Degree of Protection	IP54	Fuse Link	10x38mmLITTEL 15A
Degree of Resistance to Impacts	IK10	Certification	TUV,CB,CE
Dimension (WxHxD)	500x 500 x 180mm		
Environment		DC Circuit Breaker(1PCS)	MDB1Z-125 4P
Operating Temperature	-20°C~+60°C	Rated Insulation Voltage (Ui)	1000V
Humidity	99%	Rated Current (Ie)	125A
Altitude	2000M	Standard Compliance with	IEC 60947-2
Installation	Wall Mounting	Certification	CB, CE
		Diode(3PCS)	

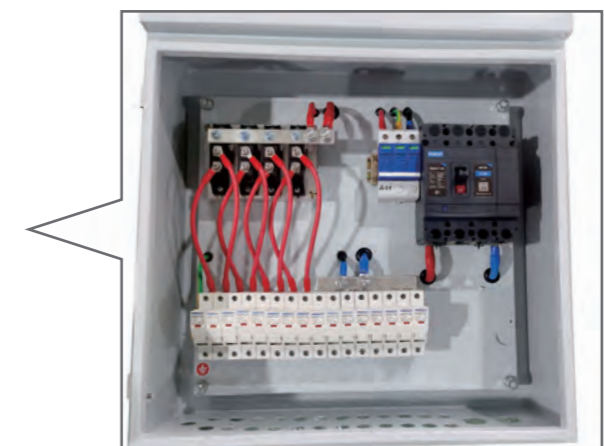
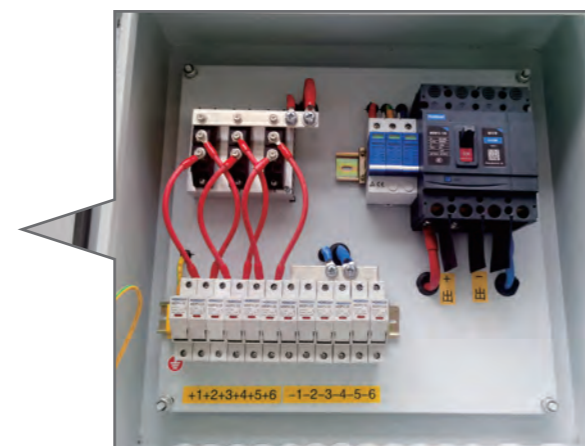
# 8 INPUT 1 OUTPUT

## MDXLD-PV8/1 1000VDC



General Data		DC SPD(1PCS)	MDSP-1000V 3P
Model No.	MDXLD-PV8/1	Max Operation Voltage (Ucpv)	1000V
Input	8 string	Standard Compliance with	IEC 61643
Output	1 string	Maximum Discharge Current	40KA
Maximum Voltage	1000V	Certification	TUV,CE,CB
Maximum Current Output	63A		
Enclosure		DC Fuse(16PCS)	MDPV-30
Material Type	Metal	Rated Working Voltage	1000V
Degree of Protection	IP54	Fuse Link	10x38mmLITTEL 15A
Degree of Resistance to Impacts	IK10	Certification	TUV,CB,CE
Dimension (WxHxD)	500x 500 x 180mm		
Environment		DC Circuit Breaker(1PCS)	MDB1Z-125 4P
Operating Temperature	-20°C~+60°C	Rated Insulation Voltage (Ui)	1000V
Humidity	99%	Rated Current (Ie)	125A
Altitude	2000M	Standard Compliance with	IEC 60947-2
Installation	Wall Mounting	Certification	CB, CE
		Diode(4PCS)	

Metal Combiner box



# 8 INPUT 8 OUTPUT

## MDXLD-PV8/8 1000VDC



General Data		DC SPD(8PCS)	MDSP-1000V 2P
Model No.	MDXLD-PV8/8	Max Operation Voltage (Ucpv)	1000V
Input	8 string	Standard Compliance with	IEC 61643
Output	8 string	Maximum Discharge Current	40KA
Maximum Voltage	1000V	Certification	TUV,CE,CB
Maximum Current Output	63A		
Enclosure		DC Fuse(16PCS)	MDPV-30
Material Type	Metal	Rated Working Voltage	1000V
Degree of Protection	IP54	Fuse Link	10x38mmLITTEL 15A
Degree of Resistance to Impacts	IK10	Certification	TUV,CB,CE
Dimension (WxHxD)	Custom Size		
Environment		DC Circuit Breaker(8PCS)	MDB1Z-4P
Operating Temperature	-20°C~+60°C	Rated Insulation Voltage (Ui)	1000V
Humidity	99%	Rated Current (Ie)	63A
Altitude	2000M	Standard Compliance with	IEC 60947-2
Installation	Wall Mounting	Certification	CB, CE
		Diode(8PCS)	

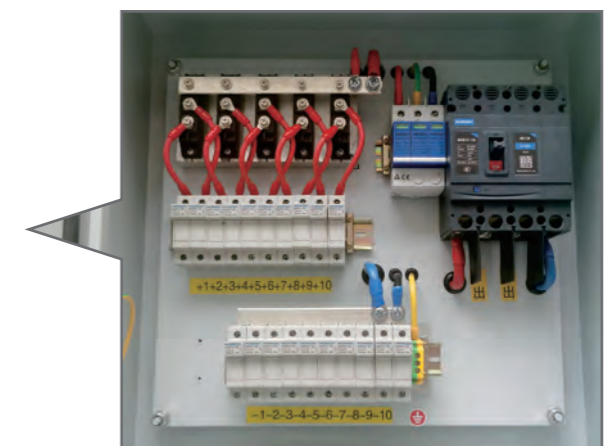


# 10 INPUT 1 OUTPUT

## MDXLD-PV10/1 1000VDC



General Data		DC SPD(1PCS)	MDSP-1000V 3P
Model No.	MDXLD-PV10/1	Max Operation Voltage (Ucpv)	1000V
Input	10 string	Standard Compliance with	IEC 61643
Output	1 string	Maximum Discharge Current	40KA
Maximum Voltage	1000V	Certification	TUV,CE,CB
Maximum Current Output	250A		
Enclosure		DC Fuse(20PCS)	MDPV-30
Material Type	Metal	Rated Working Voltage	1000V
Degree of Protection	IP54	Fuse Link	10x38mmLITTEL 15A
Degree of Resistance to Impacts	IK10	Certification	TUV,CB,CE
Dimension (WxHxD)	500x 500 x 180mm		
Environment		DC Circuit Breaker(1PCS)	MDB1Z-250 4P
Operating Temperature	-20°C~+60°C	Rated Insulation Voltage (Ui)	1000V
Humidity	99%	Rated Current (Ie)	250A
Altitude	2000M	Standard Compliance with	IEC 60947-2
Installation	Wall Mounting	Certification	CB, CE
		Diode(5PCS)	



Metal  
Combiner box

# 10 INPUT 10 OUTPUT

## MDXLD-PV10/10 1000VDC



General Data		DC SPD(10PCS)	MDSP-1000V 2P
Model No.	MDXLD-PV10/10	Max Operation Voltage (Ucpv)	1000V
Input	10 string	Standard Compliance with	IEC 61643
Output	10 string	Maximum Discharge Current	40KA
Maximum Voltage	1000V	Certification	TUV,CE,CB
Maximum Current Output	63A		

Enclosure		DC Fuse(20PCS)	MDPV-30
Material Type	Metal	Rated Working Voltage	1000V
Degree of Protection	IP54	Fuse Link	10x38mmLITTEL 15A
Degree of Resistance to Impacts	IK10	Certification	TUV,CB,CE
Dimension (WxHxD)	700x 800 x 180mm		

Environment		DC Circuit Breaker(10PCS)	MDB1Z-4P
Operating Temperature	-20°C~+60°C	Rated Insulation Voltage (Ui)	1000V
Humidity	99%	Rated Current (Ie)	63A
Altitude	2000M	Standard Compliance with	IEC 60947-2
Installation	Wall Mounting	Certification	CB, CE



# 12 INPUT 1 OUTPUT

## MDXLD-PV12/1 1000VDC



General Data		DC SPD(1PCS)	MDSP-1000V 3P
Model No.	MDXLD-PV12/1	Max Operation Voltage (Ucpv)	1000V
Input	12 string	Standard Compliance with	IEC 61643
Output	1 string	Maximum Discharge Current	40KA
Maximum Voltage	1000V	Certification	TUV,CE,CB
Maximum Current Output	250A		

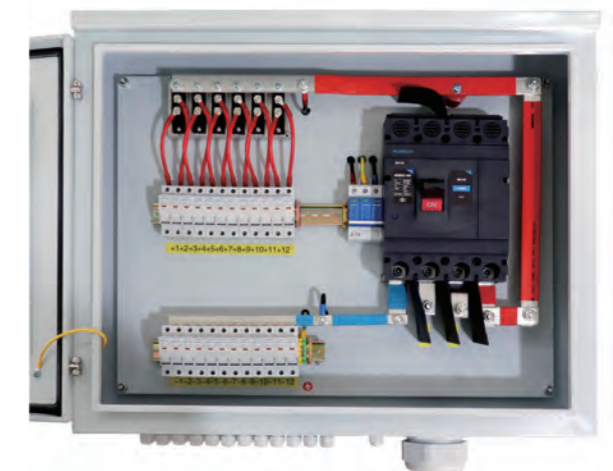
Enclosure		DC Fuse(24PCS)	MDPV-30
Material Type	Metal	Rated Working Voltage	1000V
Degree of Protection	IP54	Fuse Link	10x38mmLITTEL 15A
Degree of Resistance to Impacts	IK10	Certification	TUV,CB,CE
Dimension (WxHxD)	500x 600 x 160mm		

Environment		DC Circuit Breaker(1PCS)	MDB1Z-250 4P
Operating Temperature	-20°C~+60°C	Rated Insulation Voltage (Ui)	1000V
Humidity	99%	Rated Current (Ie)	250A
Altitude	2000M	Standard Compliance with	IEC 60947-2
Installation	Wall Mounting	Certification	CB, CE

Diode(6PCS)	



# 12 INPUT 12 OUTPUT

## MDXLD-PV12/12 1000VDC



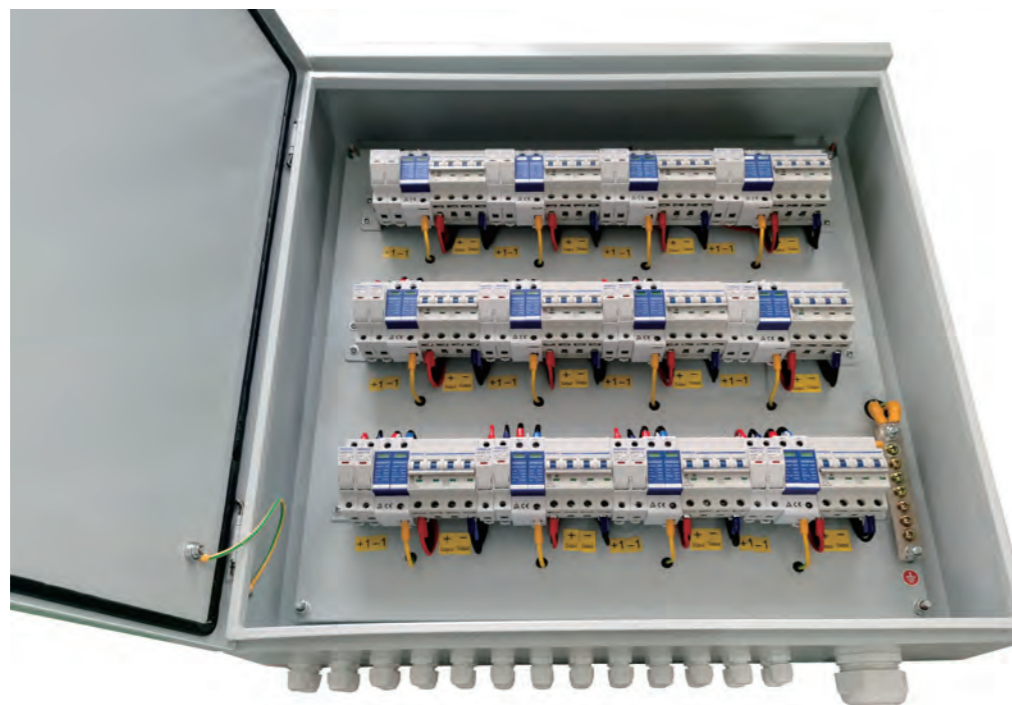
General Data		DC SPD(12PCS)	
Model No.	MDXLD-PV12/12	Max Operation Voltage (Ucpv)	1000V
Input	12 string	Standard Compliance with	IEC 61643
Output	12 string	Maximum Discharge Current	40KA
Maximum Voltage	1000V	Certification	TUV,CE,CB
Maximum Current Output	63A		

Enclosure		DC Fuse(24PCS)	
Material Type	Metal	Rated Working Voltage	1000V
Degree of Protection	IP54	Fuse Link	10x38mmLITTEL 15A
Degree of Resistance to Impacts	IK10	Certification	TUV,CB,CE
Dimension (WxHxD)	750x 750 x 180mm		

Environment		DC Circuit Breaker(12PCS)	
Operating Temperature	-20°C~+60°C	Rated Insulation Voltage (Ui)	1000V
Humidity	99%	Rated Current (Ie)	63A
Altitude	2000M	Standard Compliance with	IEC 60947-2
Installation	Wall Mounting	Certification	CB, CE



# 16 INPUT 1 OUTPUT

## MDXLD-PV16/1 1000VDC



General Data		DC SPD(1PCS)	
Model No.	MDXLD-PV16/1	Max Operation Voltage (Ucpv)	1000V
Input	16 string	Standard Compliance with	IEC 61643
Output	1 string	Maximum Discharge Current	40KA
Maximum Voltage	1000V	Certification	TUV,CE,CB
Maximum Current Output	250A		

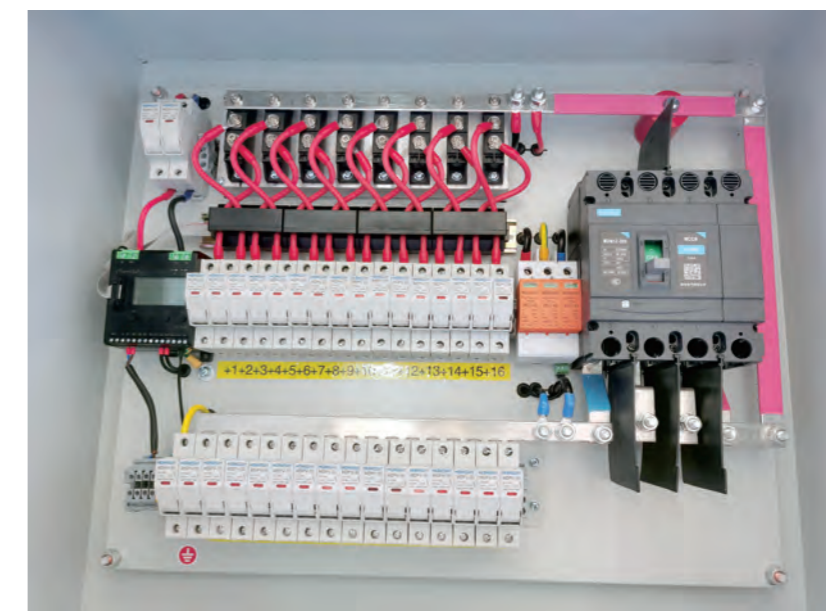
Enclosure		DC Fuse(32PCS+2PCS)	
Material Type	Metal	Rated Working Voltage	1000V
Degree of Protection	IP54	Fuse Link	10x38mmLITTEL 15A
Degree of Resistance to Impacts	IK10	Certification	TUV,CB,CE
Dimension (WxHxD)	600x 650 x 200mm		

Environment		DC Circuit Breaker(1PCS)	
Operating Temperature	-20°C~+60°C	Rated Insulation Voltage (Ui)	1000V
Humidity	99%	Rated Current (Ie)	250A
Altitude	2000M	Standard Compliance with	IEC 60947-2
Installation	Wall Mounting	Certification	CB, CE

Monitoring Module(1PCS)		Diode(8PCS)	



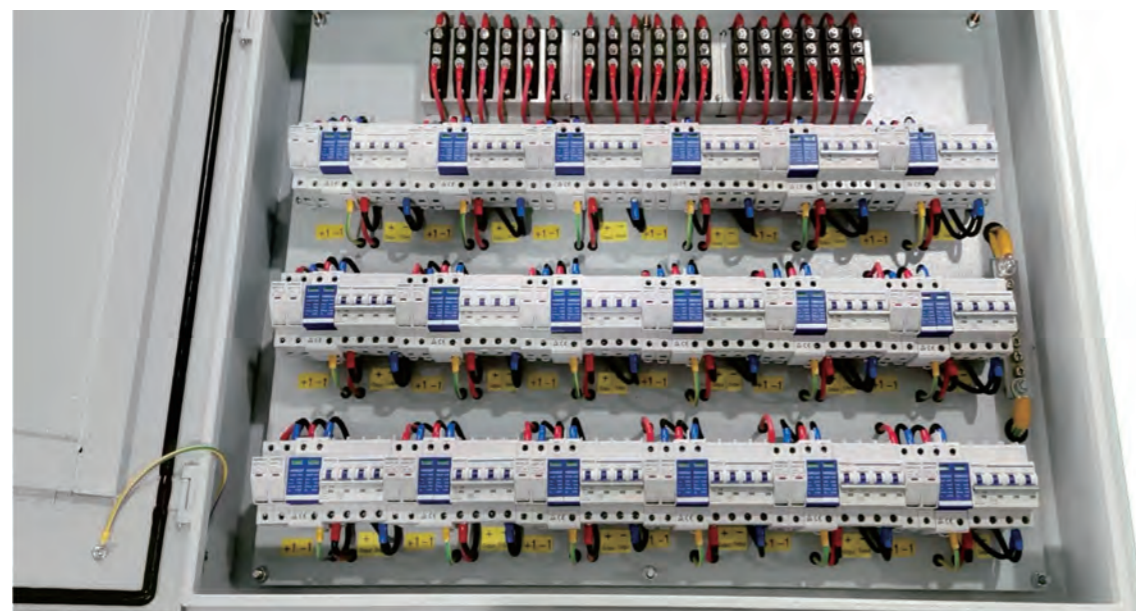
Metal Combiner box

# 18 INPUT 18 OUTPUT

## MDXLD-PV18/18 1000VDC



General Data		DC SPD(18PCS)	MDSP-1000V 3P
Model No.	MDXLD-PV18/18	Max Operation Voltage (Ucpv)	1000V
Input	18 string	Standard Compliance with	IEC 61643
Output	18 string	Maximum Discharge Current	40KA
Maximum Voltage	1000V	Certification	TUV,CE,CB
Maximum Current Output	63A		
Enclosure		DC Fuse(36PCS)	MDPV-30
Material Type	Metal	Rated Working Voltage	1000V
Degree of Protection	IP54	Fuse Link	10x38mmLITTEL 15A
Degree of Resistance to Impacts	IK10	Certification	TUV,CB,CE
Dimension (WxHxD)	Custom Size		
Environment		DC Circuit Breaker(18PCS)	MDB1Z-4P
Operating Temperature	-20°C~+60°C	Rated Insulation Voltage (Ui)	1000V
Humidity	99%	Rated Current (Ie)	63A
Altitude	2000M	Standard Compliance with	IEC 60947-2
Installation	Wall Mounting	Certification	CB, CE
		Diode(9PCS)	



Product Specification

# METAL AC COMBINER BOX

AC SERIES (IP54)



Metal AC  
Combiner Box





## 2 INPUT 1 OUTPUT MDHL-2/1 3Phase



General Data		AC SPD(1PCS)	MD1-40 4P
Model No.	MDHL-2/1	Electric rating	380V/420V,50-60Hz,3Phase
Main circuit rated Voltage	AC380V/400V	Maximum Discharge Current	40KA
Auxiliary circuit rated voltage	AC380V/400V	Standard Compliance with	EN 61643
Rated Current	0-63A	Certification	CE
Rated frequency	50-60Hz		
Enclosure		AC Circuit Breaker(3PCS)	MDB1-C65 4P
Material Type	Metal	Rated Current (Ie)	32A
Degree of Protection	IP54		
Degree of Resistance to Impacts	IK10	AC Circuit Breaker(1PCS)	MDB1-C65 4P
Dimension (WxHxD)	750x 750 x 180mm	Rated Current (Ie)	63A
Environment			
Operating Temperature	-20°C~+60°C		
Humidity	99%		
Altitude	2000M		
Installation	Wall Mounting		

## 3 INPUT 1 OUTPUT MDHL-3/1 3Phase



General Data		AC SPD(1PCS)	MD1-40 4P
Model No.	MDHL-3/1	Electric rating	380V/420V,50-60Hz,3Phase
Main circuit rated Voltage	AC380V/400V	Maximum Discharge Current	40KA
Auxiliary circuit rated voltage	AC380V/400V	Standard Compliance with	EN 61643
Rated Current	0-630A	Certification	CE
Rated frequency	50-60Hz		
Enclosure		AC Circuit Breaker(1PCS)	MDB1-C63 4P
Material Type	Metal	Rated Current (Ie)	63A
Degree of Protection	IP54		
Degree of Resistance to Impacts	IK10	AC MCCB(3PCS)	MDM1-250/400V 3P
Dimension (WxHxD)	850x 850 x 180mm	Rated Current (Ie)	250A
Environment		AC MCCB(1PCS)	MDM1-630/400V 3P
Operating Temperature	-20°C~+60°C	Rated Current (Ie)	630A
Humidity	99%		
Altitude	2000M		
Installation	Wall Mounting		



# 5 INPUT 1 OUTPUT

## MDHL-5/1 3Phase



General Data		AC SPD(1PCS)	MD1-40 4P
Model No.	MDHL-5/1	Electric rating	380V/420V,50-60Hz,3Phase
Main circuit rated Voltage	AC380V/400V	Maximum Discharge Current	40KA
Auxiliary circuit rated voltage	AC380V/400V	Standard Compliance with	EN 61643
Rated Current	0-1250A	Certification	CE
Rated frequency	50-60Hz		
Enclosure		AC Circuit Breaker(3PCS)	MDB1-D63 4P
Material Type	Metal	Rated Current (Ie)	63A
Degree of Protection	IP54		
Degree of Resistance to Impacts	IK10	AC MCCB(5PCS)	MDM1-250/400V 3P
Dimension (WxHxD)	Custom Size	Rated Current (Ie)	250A
Environment		AC MCCB(1PCS)	MDM1-1250/400V 3P
Operating Temperature	-20°C~+60°C	Rated Current (Ie)	1250A
Humidity	99%		
Altitude	2000M		
Installation	Wall Mounting		



# 6 INPUT 1 OUTPUT

## MDHL-6/1 3Phase



General Data		AC SPD(1PCS)	MD1-40 2P
Model No.	MDHL-6/1	Electric rating	380V/420V,50-60Hz,3Phase
Main circuit rated Voltage	AC380V/400V	Maximum Discharge Current	40KA
Auxiliary circuit rated voltage	AC380V/400V	Standard Compliance with	EN 61643
Rated Current	0-630A	Certification	CE
Rated frequency	50-60Hz		
Enclosure		DC Circuit Breaker(6PCS)	MDB1-C16 2P
Material Type	Metal	Rated Current (Ie)	16A
Degree of Protection	IP54		
Degree of Resistance to Impacts	IK10	DC Circuit Breaker(1PCS)	MDB1-C32 2P
Dimension (WxHxD)	850x 850 x 180mm	Rated Current (Ie)	32A
Environment		DC Circuit Breaker(1PCS)	MDB1-C63 2P
Operating Temperature	-20°C~+60°C	Rated Current (Ie)	63A
Humidity	99%		
Altitude	2000M		
Installation	Wall Mounting		



Metal AC  
Combiner Box